



MS4 Program Updates

Gilmore and Associates, Inc.

Amanda Fuller, P.E., Township Engineer

What is the NPDES MS4 Program?

- **Municipal Separate Storm Sewer System**
- **National Pollutant Discharge Elimination System**
- Federally Mandated Permit Program (enforced by EPA) → PA DEP
- Goal for the Program
 - Recognize and increase awareness of stormwater as a point-source pollutant



What can residents do to help keep the waterways clean?

Car Care

- Use water friendly soaps when washing your car
- Prevent the water from reaching the stormwater drain

Yard Care

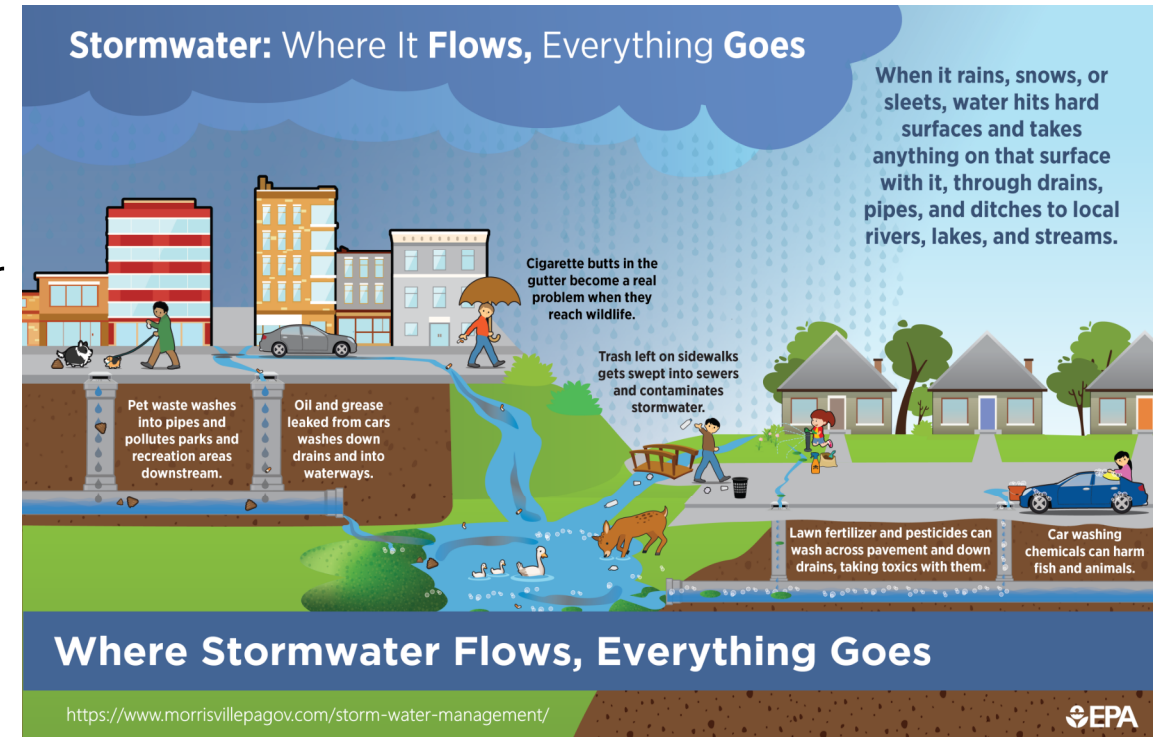
- Clean up after pets
- If you fertilize – use sparingly and follow directions
- Rake leaves and grass clippings away from stormwater drains

Snow

- Pile your snow where it is most likely to soak into the ground not into a stormwater drain

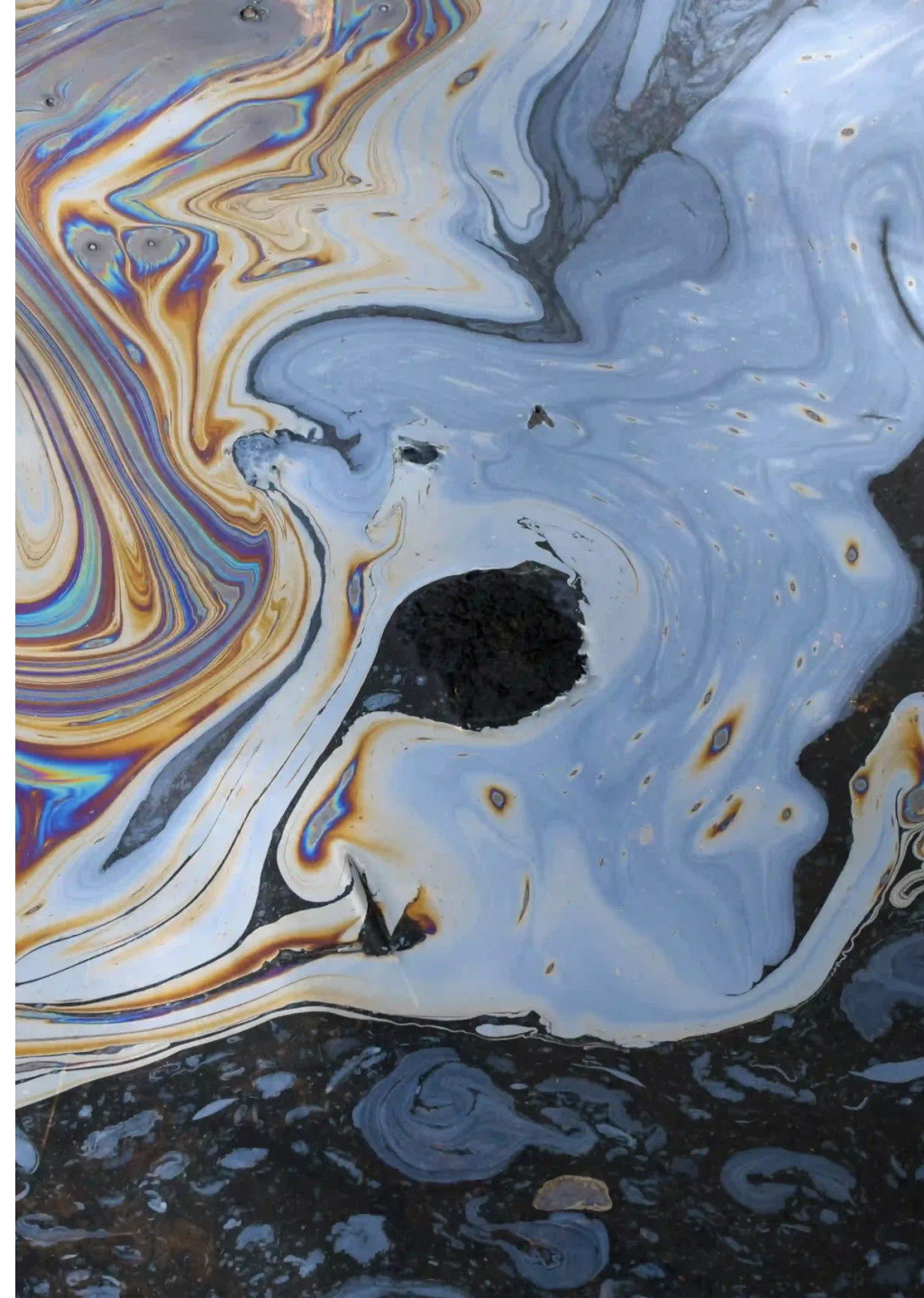
Miscellaneous

- Properly dispose of hazardous substances
- Report discharges from stormwater outfalls
- Pick up any trash on sidewalks to keep it from entering the stormwater drains



Signs of Pollution

- Discolored or muddy water
 - Brown, green, or other unusual colors
- Sheen, film or foam
- Odor
 - Strong, acrid
 - Smells of sewage, chemicals or petroleum
 - Fumes
- Garbage, debris
- Dead fish
- Green water
- Excessive aquatic plant growth



What is a Pollutant Reduction Plan?

Reduce the sediment load by 10% to **Neshaminy Creek** over the 5-year permit term.

- Rain Gardens
- Basin Retrofits
- Stream Restoration
- Riparian Buffer Enhancement
- New Stormwater Management Facilities



Completed Projects

2 Basin Retrofit Projects have been completed so far:

- Eagle Valley
- Northampton Crossing

Grant applications have been submitted for 2 additional basin retrofits:

- Hatboro Road/Syracuse Lane
- Misty Meadow Drive



Next Steps

1. Continue to apply for grant funding for basin retrofit projects.
2. Continue compliance with annual MS4 requirements.
3. Monitor requirements for next permit cycle.

For additional Information:

Township Website – northhamptontownship.com

➡ Information

➡ Stormwater Management



The goal is “Only Rain Down Your Drain”

